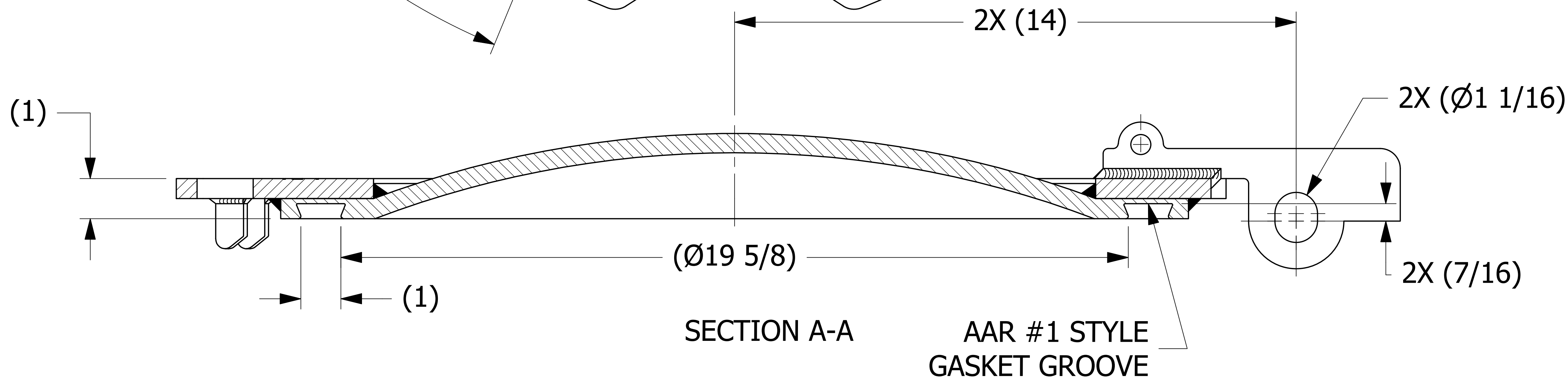


VIEW B-B
SCALE 1 : 1

NOTE:
AAR APPROVAL # E-182113.



REV	BY	DATE	DESCRIPTION
J	WEB	5-17-19	REMOVED QAP4A-1 NOTE; Q-2.15.7 WAS QAP4C-1; D-008 WAS DSS 12; ADDED D-005 NOTE; AAR # WAS E-089005; ADDED CHAMFER NOTE, (12 1/4) WAS (12 1/2)
I	WEB	10-5-17	HINGE WELDS WERE 3/8", ADDED NOTE 6, UPDATED WELD NOTE, ADDED "SALCO" TO STAMPING
H	RJP	2-9-17	TMCDR20811 WAS TMCR20856 & TMCDSS6MF, B41731 WAS TMCHS4UT, 2X .44 WAS .438, 4X .06 WAS 4X .063, "TEST PER QAP4C-1" WAS "MUST PASS QAP4C-1", REMOVED QAP5A-1, ADDED 4X (3/4), 4X (1 1/4), 8X (1 1/8), 2X (Ø1 1/16), 45° TYP., & LOT CONTROL, UPDATED TITLE BLOCK
G	KHK	12-27-12	ADDED SECTION D. UPDATED VIEWS, BOM, DRAWING SIZE
F	TAJ	4-20-12	ADDED NOTE #5 & HEAT/LOT NOTE
E	CHL	11-1-10	ADDED PART# TO RING SURFACE & UPDATED NOTES
D	CHL	5-27-08	UPDATED NOTES & ADDED VIEW C
C	AJB	5-5-06	AAR APPROVAL WAS E-989070
B	CHL	8-8-00	CHANGED DIM 11.69-11.96
A	CHL	2-24-00	UPDATED TO 3D

UNLESS OTHERWISE SPECIFIED
DIMENSIONAL TOLERANCES

FRACTIONAL: ±1/16

X.XX: ±.03

X.XXX: ±.015

ANGULAR: ±1°

DEBURR ALL SHARP EDGES.
ALL MACHINED SURFACES TO
HAVE A 125 RMS FINISH UNLESS
NOTED OTHERWISE.

THIRD ANGLE PROJECTION

DRAWN BY:	FOD
CHECKED BY:	SAB
PROTOTYPE BY:	FOD
PROTOTYPE DATE:	11/5/1999
APPROVED FOR PRODUCTION BY:	SAB
PRODUCTION DATE:	11/15/1999

SALCO PRODUCTS, INC.		
PART NAME: MANWAY COVER 20" 8-BOLT		
MATERIAL: 316L SS		
PROJECT #: 991106A	SHEET #: 1 OF 1	SCALE: 2:3
DRAWING #: E13884		PART #: TMC20811